

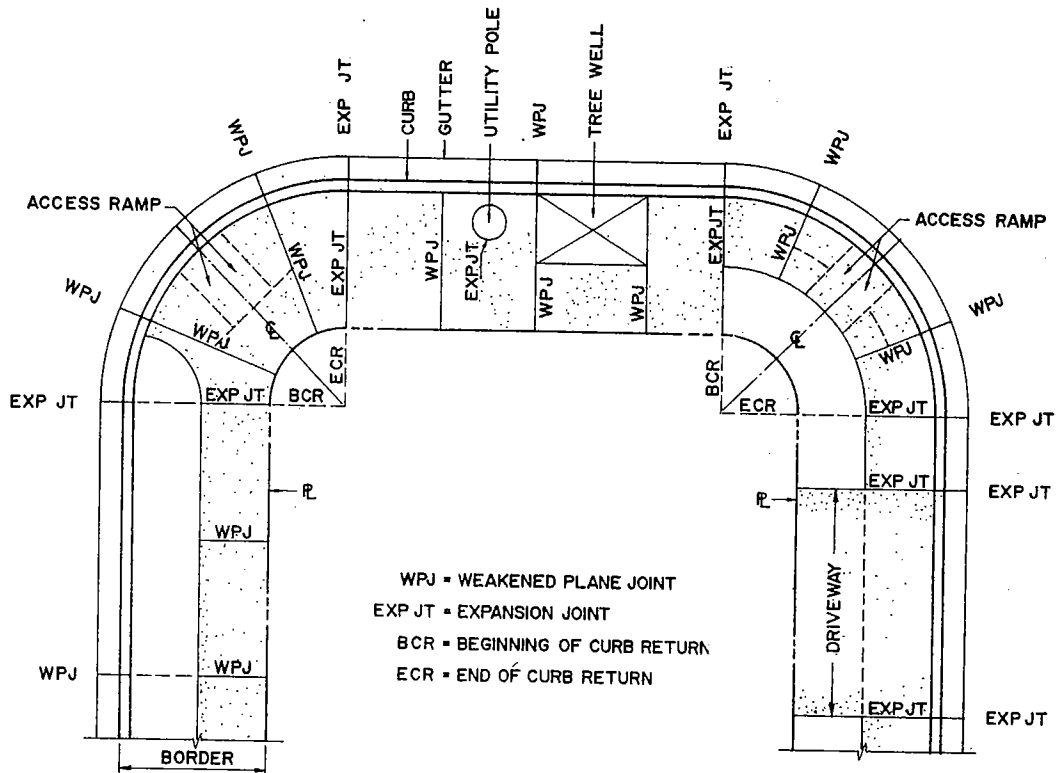
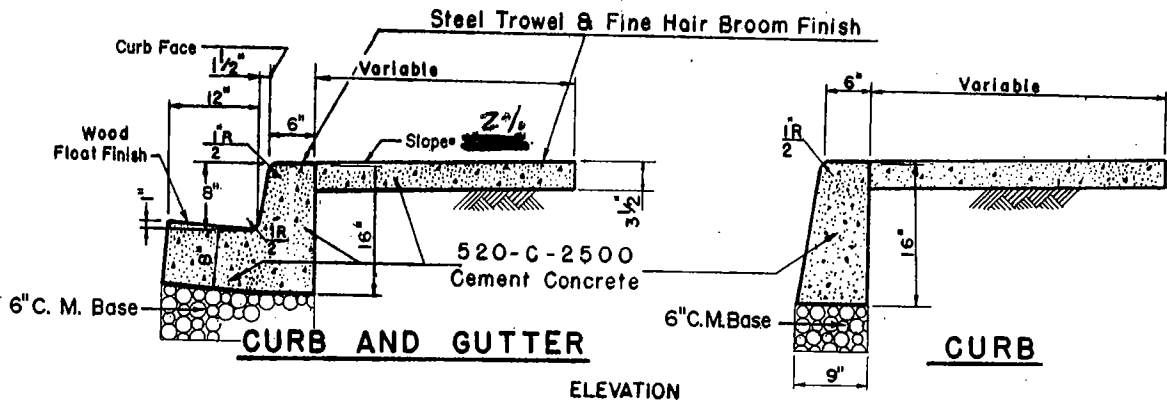
1. No signs, poles, anchors or fire hydrants shall be constructed within the curb return whenever possible.
2. The center of all fire hydrants shall be placed 2.0' from curb face.
3. The face of all power poles shall be placed 1.5' from the curb face.
4. All signs shall be placed so as to have a 1.0' clearance from the curb face to the edge of the sign.
5. Traffic signals and stop signs shall have priority over all other structures.
6. A 5.0' minimum clearance shall be maintained between all structures including fire hydrants, signs, driveways, trees, anchors, water vaults, street lights, traffic signals or any other structures. Power poles shall have a 7.0' clearance from all other vertically protruding structures when possible.
7. All underground searches and alerts shall be accomplished by the entity placing the object.
8. Encroachment permit accompanied by a drawing is required prior to starting any work in the public right of way.

# STANDARD OFFSET REQUIREMENTS

CITY OF VERNON, CALIFORNIA  
COMMUNITY SERVICES DEPARTMENT

NOVEMBER 1994

STANDARD PLAN  
**PV 2133**



**NOTES:**

1. WEAKENED PLANE JOINTS SHALL BE USED AT REGULAR INTERVALS 10 FEET IN WALKS OR 20 FEET IN CURB AND GUTTERS.
2. 1/4" EXPANSION JOINT FELT SHALL BE PLACED AT 60 FEET INTERVALS IN CURB, GUTTER AND WALK, AT THE BCR AND ECR, AT DRIVEWAYS, AND AROUND UTILITY POLES IN SIDEWALK AREAS. WALK AND CURB JOINTS SHALL BE ALIGNED.
3. ALL CONCRETE SHALL BE ONE COURSE NO TOPPING PERMITTED.
4. MATCH JOINT LINES WHEN REPLACING EXISTING SIDEWALK.
5. THE FLOWLINE OF THE GUTTER SHALL BE TROWELLED SMOOTH FOR A WIDTH OF 4".
6. ADJACENT SIDEWALKS 5' ON EITHER END OF DRIVEWAYS SHALL BE POURED 8" THICK.

## STANDARD SIDEWALK, CURB AND GUTTER

CITY OF VERNON, CALIFORNIA

COMMUNITY SERVICES DEPARTMENT

AUGUST, 1969

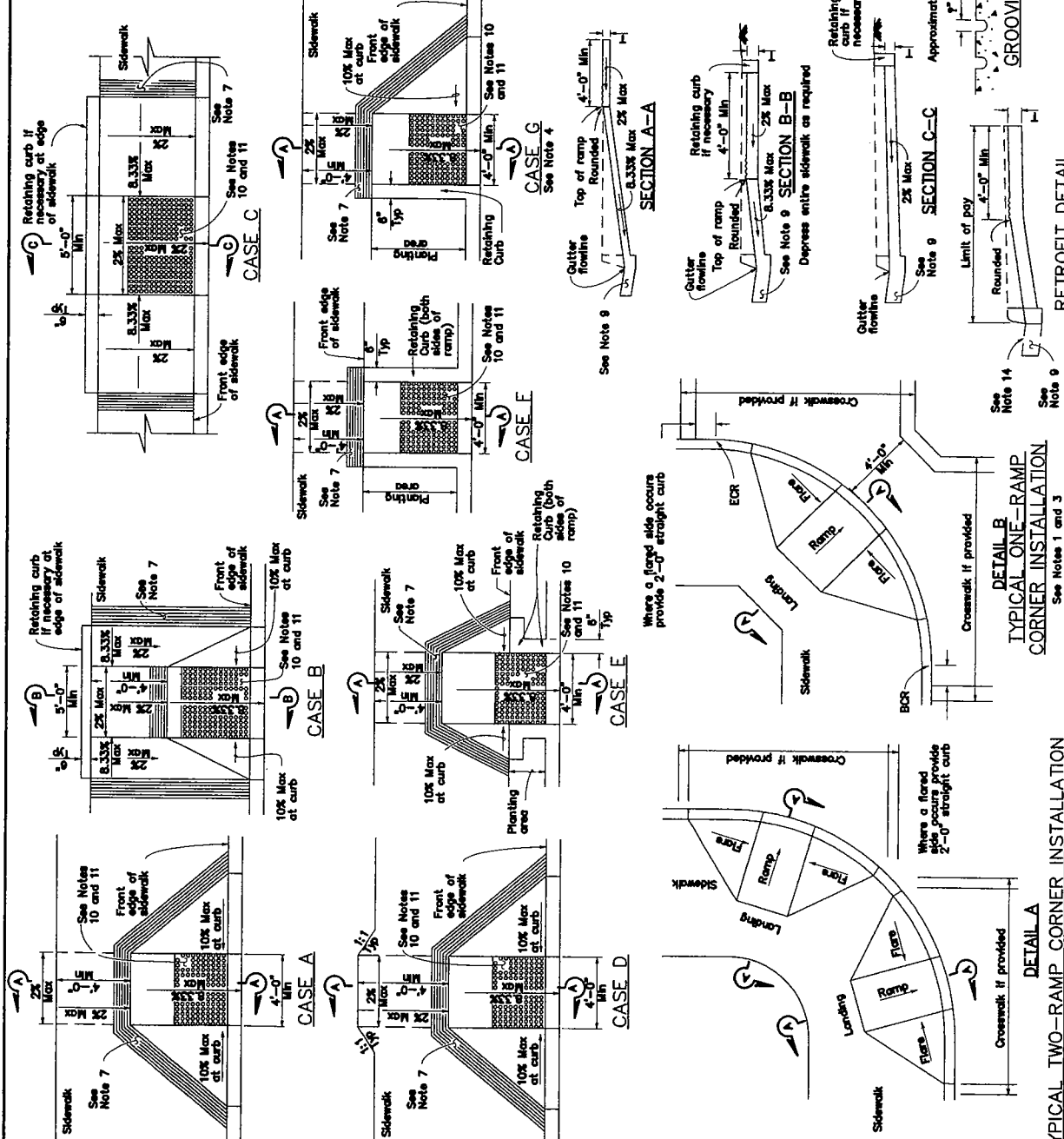
REVISION		
DATE	DISCRIPTION	NAME
5-16-69	REVISED & ADDED DETAIL	V.H.V.
5-6-71	REVISED NOTES	V.H.V.
4-6-81	REVISED C.C. MIX	J.R.P.
6-13-81	ADDED NOTES	S.A.
7-11-81	REVISED & ADDED DETAIL	S.A.
8-28-82	ADDED DETAIL & NOTES	P.A.

STANDARD PLAN  
**PV582**

**NOTES:**

- As site conditions dictate, Case A through Case G curb ramps may be used for corner installations similar to those shown in Detail A and Detail B. The case of curb ramps used in Detail A do not have to be the same. Case A through Case G curb ramps also may be used at mid block locations, as site conditions dictate.
- If distance from curb to back of sidewalk is too short to accommodate ramp and 4'-0" platform (landing), as shown in Case A, the sidewalk may be depressed longitudinally as in Case B, or C or may be widened as in Case D.
- When ramp is located in center of curb return, crosswalk configuration must be similar to that shown for Detail B.
- As site conditions dictate, the retaining curb side and the flared side of the Case G ramp shall be constructed in reversed position.
- If located on a curve, the edge of the ramp need not be parallel, but the minimum width of the ramp shall be 4'-0".
- Side slope of ramp faces very uniformly from a maximum of 10% at curb to conform with longitudinal sidewalk slope adjacent to top of the ramp, except in Case C and Case F.
- The curb ramp shall be outlined, as shown, with a 1'-0" wide border with 1/2" grooves approximately 1/4" on center. See grooving detail.
- Transitions from ramps and landing to walks, graters or streets shall be flush and free of abrupt changes.
- Minimum slopes of adjoining gutters, the road surface immediately adjacent to the curb ramp, or accessible route shall not exceed 5 percent within 4'-0" of the top and bottom of the curb ramp.
- Curb ramps shall have a detectable warning surface that extends the full width and 3'-0" depth of the ramp. Detectable Warning Surfaces shall conform to the details on the plan and the requirements in the Special Provisions.
- The edge of the detectable warning surface nearest the street shall be between 6" and 8" from the gutter flowline.
- Sidewalk and ramp thickness, "T", shall be 3/4" minimum.
- UTILITY pull boxes, manholes, vaults and all other utility facilities within the boundaries of the curb ramp will be relocated or adjusted to grade by the owner prior to, or in conjunction with, curb ramp construction.
- For retrofit conditions, removal and replacement of curb occur will be at the Contractor's option, unless otherwise shown on project plans.

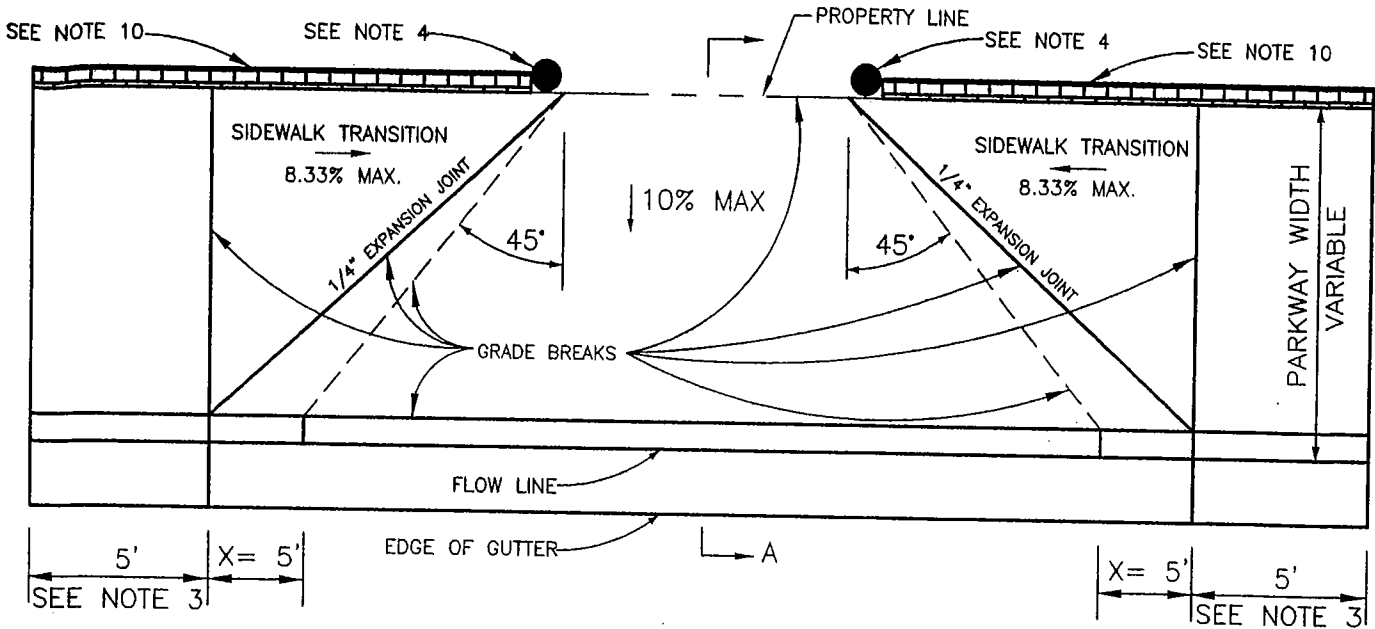
15. Ramps shall be poured monolithically with adjoining curb and grater.



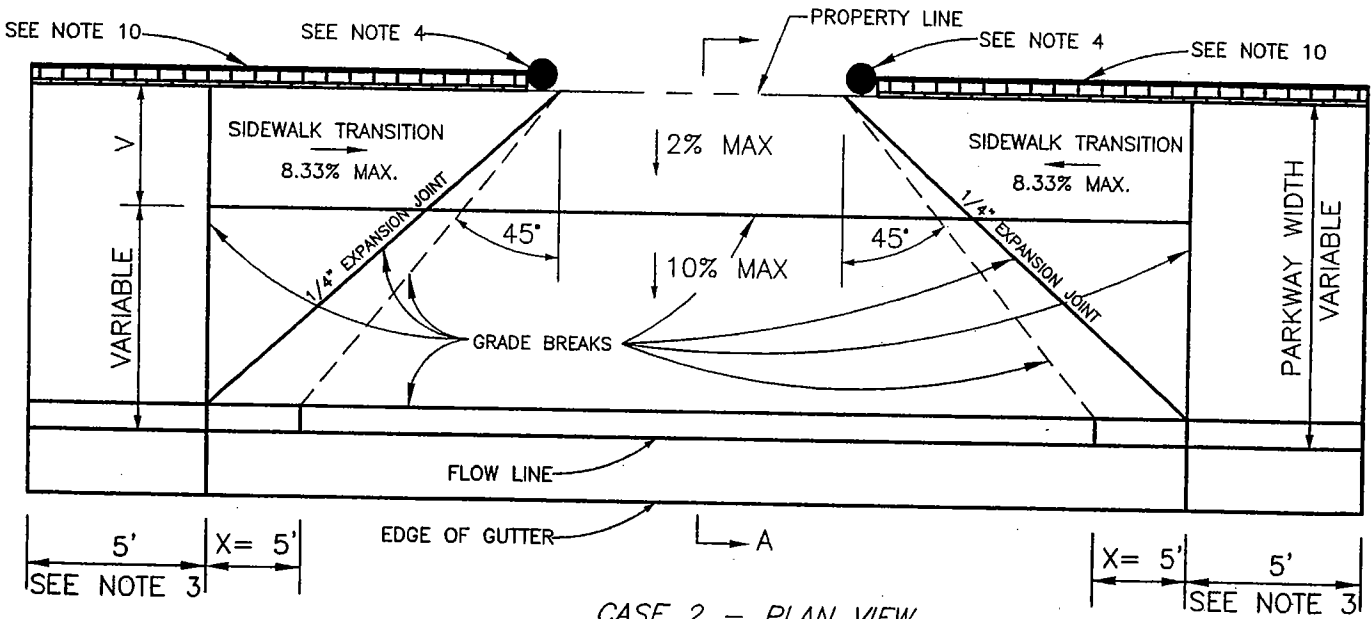
STATE OF CALIFORNIA  
DEPARTMENT OF TRANSPORTATION  
**CURB RAMP DETAILS**  
NO SCALE

RSP A88A DATED SEPTEMBER 1, 2006 SUPERSEDES STANDARD PLAN A88A  
DATED MAY 1, 2006 - PAGE 115 OF THE STANDARD PLANS BOOK DATED MAY 2006.

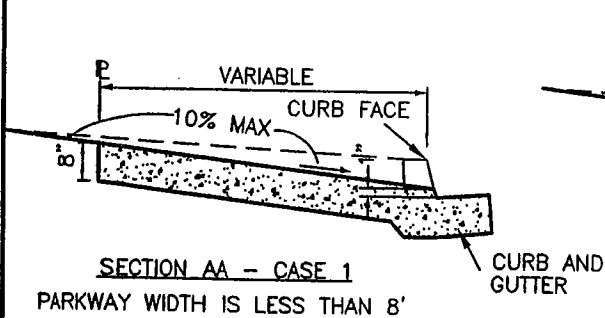
**REVISED STANDARD PLAN RSP A88A**



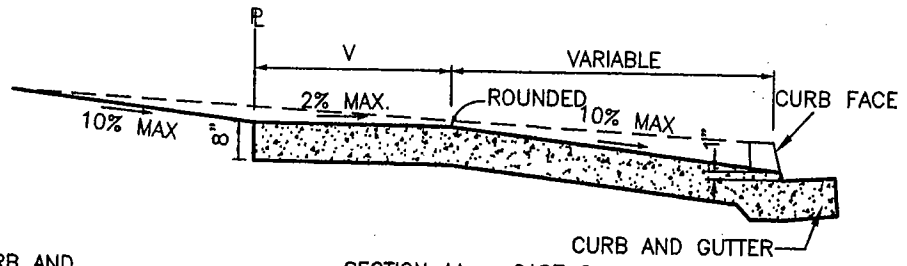
**CASE 1 - PLAN VIEW**  
 PARKWAY WIDTH IS LESS THAN 8'



**CASE 2 - PLAN VIEW**  
 PARKWAY WIDTH IS GREATER THAN OR EQUAL TO 8'



**SECTION AA - CASE 1**  
 PARKWAY WIDTH IS LESS THAN 8'

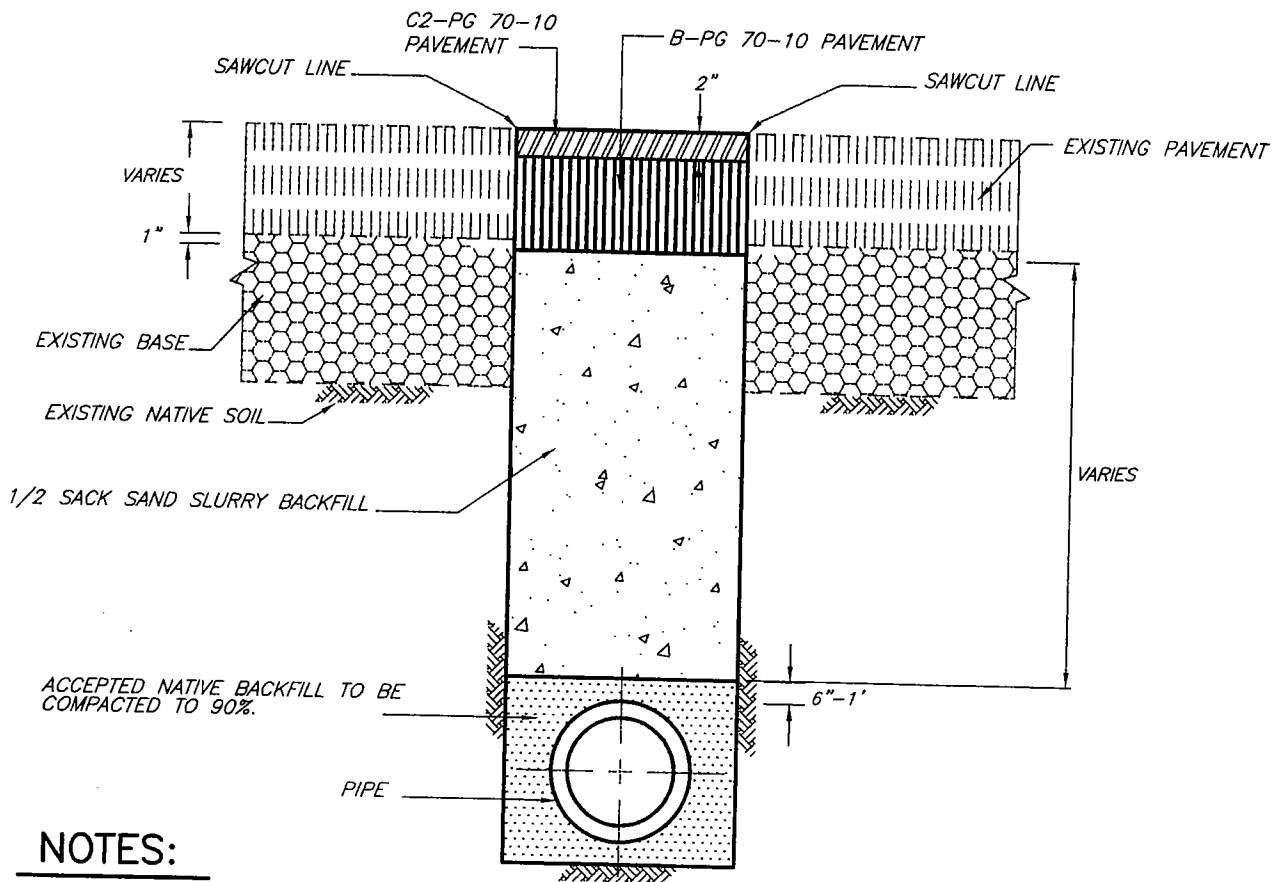


**SECTION AA - CASE 2**  
 PARKWAY WIDTH IS GREATER THAN OR EQUAL TO 8'

REVISIONS		
DATE	DESCRIPTION	INITIALS
4/2/03	CREATED	LM
12/08	CREATED ANGLED APPROACH DRIVEWAY	EM
8/07	REVISED CASE 1E DRIVEWAY	PC

# STANDARD DRIVEWAY

CITY OF VERNON, CALIFORNIA  
 COMMUNITY SERVICES & WATER DEPARTMENT  
 AUGUST 2007



**NOTES:**

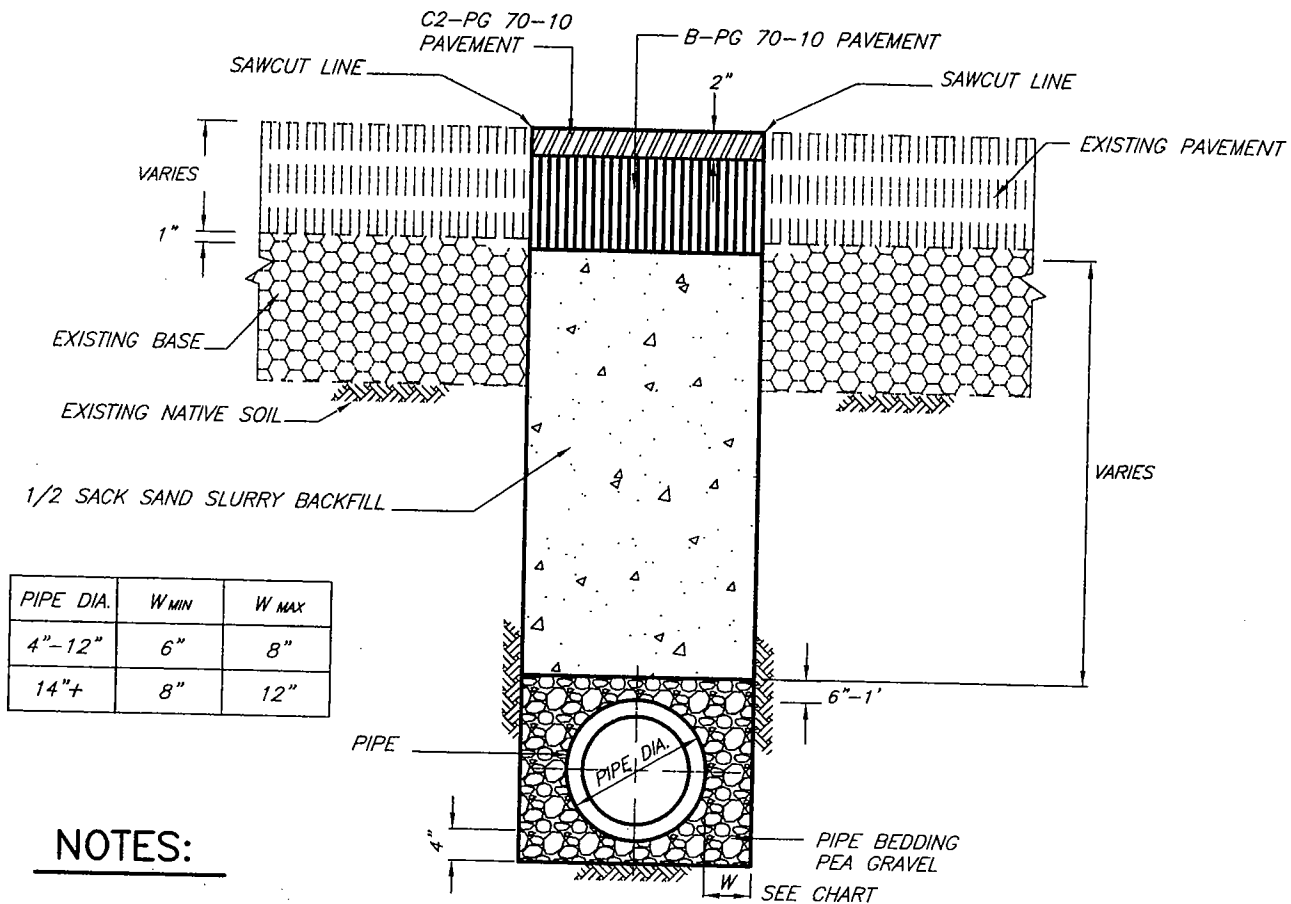
1. NEW PAVEMENT THICKNESS SHALL BE 1 INCH BELOW THE EXISTING TO A MAXIMUM OF 10 INCHES, UNLESS OTHERWISE APPROVED BY THE CITY ENGINEER.
2. ASPHALT CONCRETE SHALL BE B-PG70-10. TACK COAT SHALL BE APPLIED PER LATEST EDITION OF THE STANDARD SPECIFICATIONS FOR PUBLIC WORKS CONSTRUCTION (GREENBOOK).
3. FINISHED ASPHALT CONCRETE SHALL BE C2-PG70-10, 2" THICK AND PAVED FLUSH WITH ADJACENT PAVEMENT WITHIN SAME DAY AS NEW A.C. PLACEMENT.
4. DAMAGED AND UNDERMINED PAVEMENT SHALL BE REMOVED BY SAW CUTTING FULL DEPTH PARALLEL TO TRENCH AND REPLACED WITH ASPHALT CONCRETE PER ABOVE AT NO COST TO THE CITY.
5. FOR CONCRETE STREETS THE WIDTH OF CONCRETE TO BE REPLACED SHALL EITHER BE FROM COLD JOINT LINE TO COLD JOINT LINE OR APPROVED TRENCH WIDTH WITH CONCRETE DOWELS (MIN. #4 BARS) PLACED EVERY 3 FT STAGGERED.
6. IF THE SAWCUT LINE IS 3 FEET OR LESS FROM GUTTER LINE OR COLD JOINT THE A.C. PAVEMENT OR CONCRETE SHALL BE REMOVED TO GUTTER LINE OR COLD JOINT.
7. ALL TRAFFIC SIGNAL LOOPS, DOTS, LANE LINES, PEDESTRIAN LINES, AND OTHER PAINTED MARKINGS ARE TO BE REPLACED IN KIND BY THE CONTRACTOR.
8. AN ENCROACHMENT PERMIT SHALL BE OBTAINED FROM THE CITY OF VERNON COMMUNITY SERVICES AND WATER DEPARTMENT PRIOR TO ANY ENCROACHMENT OR CONSTRUCTION WITHIN A CITY OF VERNON RIGHT-OF-WAY.
9. THE CONTRACTOR SHALL OBTAIN AN UNDERGROUND SERVICE ALERT TICKET AND OBTAIN A CALIFORNIA COMMISSION OF OCCUPATIONAL SAFETY AND HEALTH (DOSH) PERMIT IF THE TRENCH IS GREATER THAN 5 FEET DEEP PRIOR TO THE COMMENCEMENT OF WORK.
10. THE CONTRACTOR IS RESPONSIBLE FOR FURNISHING AND MAINTAINING ALL TRAFFIC CONTROLS AND SIGNAGE PER W.A.T.C.H. MANUAL DURING ENTIRE PROJECT.
11. NO STOCK PILING OF CONSTRUCTION MATERIALS OR EQUIPMENT SHALL BE ALLOWED OVER NIGHT IN THE PUBLIC RIGHT-OF-WAY UNLESS APPROVED BY THE CITY ENGINEER.
12. ALL NECESSARY STEEL PLATES SHALL BE PROVIDED AT THE JOB SITE PRIOR TO ANY REMOVALS. PLATES SHALL BE SKID RESISTANT, RESTRAINED AND RAMPED WITH A.C. COLD MIX.
13. ALL TRENCHES SHALL BE BACKFILLED WITH 1/2 SACK SAND SLURRY UNLESS OTHERWISE APPROVED BY THE CITY ENGINEER.
14. THE CONSTRUCTION SHALL COMPLY WITH CITY STANDARDS AND THE GREEN BOOK.

**TYPICAL TRENCH PAVING SECTION**

REVISIONS		
DATE	DESCRIPTION	INITIALS
11/9/02	LAST UPDATE	L.M.
12/2/02	ADDED NOTE 12.	L.M.
11/12/03	UPDATED NOTE 3.	L.M.
5/25/04	ADDED NOTE 3.	L.M.
2/14/05	UPDATED NOTE 2, 3 AND 4.	P.C.
10/18/06	UPDATED NOTES 3 & 4.	L.M.
11/21/06	UPDATED NOTES 2, 3 & 4.	L.M.

CITY OF VERNON, CALIFORNIA  
COMMUNITY SERVICES & WATER DEPARTMENT  
OCTOBER 2006

STANDARD PLAN V2264  
SHEET 1 OF 2



**NOTES:**

1. NEW PAVEMENT THICKNESS SHALL BE 1 INCH BELOW THE EXISTING TO A MAXIMUM OF 10 INCHES, UNLESS OTHERWISE APPROVED BY THE CITY ENGINEER.
2. ASPHALT CONCRETE SHALL BE B-PG70-10. TACK COAT SHALL BE APPLIED PER LATEST EDITION OF THE STANDARD SPECIFICATIONS FOR PUBLIC WORKS CONSTRUCTION (GREENBOOK).
3. FINISHED ASPHALT CONCRETE SHALL BE C2-PG70-10, 2" THICK AND PAVED FLUSH WITH ADJACENT PAVEMENT WITHIN SAME DAY AS NEW A.C. PLACEMENT.
4. DAMAGED AND UNDERMINED PAVEMENT SHALL BE REMOVED BY SAW CUTTING FULL DEPTH PARALLEL TO TRENCH AND REPLACED WITH ASPHALT CONCRETE PER ABOVE AT NO COST TO THE CITY.
5. FOR CONCRETE STREETS THE WIDTH OF CONCRETE TO BE REPLACED SHALL EITHER BE FROM COLD JOINT LINE TO COLD JOINT LINE OR APPROVED TRENCH WIDTH WITH CONCRETE DOWELS (MIN. #4 BARS) PLACED EVERY 3 FT STAGGERED.
6. IF THE SAWCUT LINE IS 3 FEET OR LESS FROM GUTTER LINE OR COLD JOINT THE A.C. PAVEMENT OR CONCRETE SHALL BE REMOVED TO GUTTER LINE OR COLD JOINT.
7. ALL TRAFFIC SIGNAL LOOPS, DOTS, LANE LINES, PEDESTRIAN LINES, AND OTHER PAINTED MARKINGS ARE TO BE REPLACED IN KIND BY THE CONTRACTOR.
8. AN ENCROACHMENT PERMIT SHALL BE OBTAINED FROM THE CITY OF VERNON COMMUNITY SERVICES AND WATER DEPARTMENT PRIOR TO ANY ENCROACHMENT OR CONSTRUCTION WITHIN A CITY OF VERNON RIGHT-OF-WAY.
9. THE CONTRACTOR SHALL OBTAIN AN UNDERGROUND SERVICE ALERT TICKET AND OBTAIN A CALIFORNIA COMMISSION OF OCCUPATIONAL SAFETY AND HEALTH (DOSH) PERMIT IF THE TRENCH IS GREATER THAN 5 FEET DEEP PRIOR TO THE COMMENCEMENT OF WORK.
10. THE CONTRACTOR IS RESPONSIBLE FOR FURNISHING AND MAINTAINING ALL TRAFFIC CONTROLS AND SIGNAGE PER W.A.T.C.H. MANUAL DURING ENTIRE PROJECT.
11. NO STOCK PILING OF CONSTRUCTION MATERIALS OR EQUIPMENT SHALL BE ALLOWED OVER NIGHT IN THE PUBLIC RIGHT-OF-WAY UNLESS APPROVED BY THE CITY ENGINEER.
12. ALL NECESSARY STEEL PLATES SHALL BE PROVIDED AT THE JOB SITE PRIOR TO ANY REMOVALS. PLATES SHALL BE SKID RESISTANT, RESTRAINED AND RAMPED WITH A.C. COLD MIX.
13. ALL TRENCHES SHALL BE BACKFILLED WITH 1/2 SACK SAND SLURRY UNLESS OTHERWISE APPROVED BY THE CITY ENGINEER.
14. THE CONSTRUCTION SHALL COMPLY WITH CITY STANDARDS AND THE GREEN BOOK.

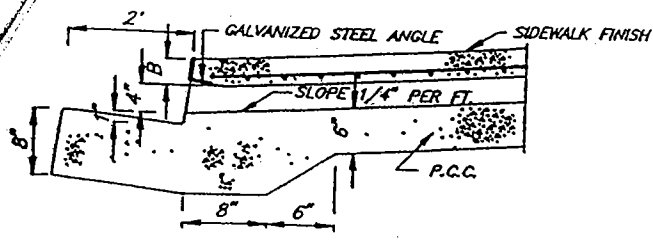
**TYPICAL TRENCH PAVING SECTION  
FOR SEWER LATERAL**

CITY OF VERNON, CALIFORNIA  
COMMUNITY SERVICES & WATER DEPARTMENT  
OCTOBER 2006

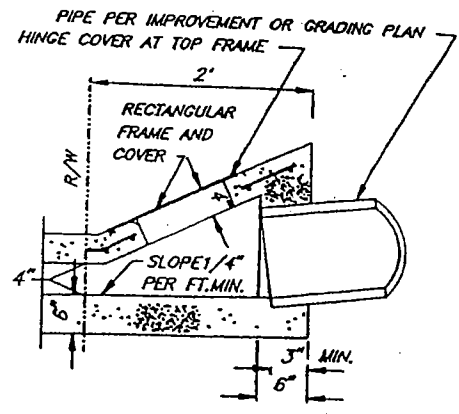
STANDARD PLAN V2264

SHEET 2 OF 2

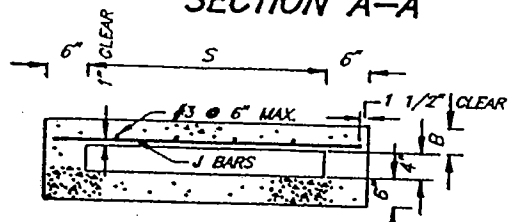
REVISIONS		
DATE	DESCRIPTION	INITIALS
11/9/02	LAST UPDATE	L.M.
12/2/02	ADDED NOTE 12.	L.M.
11/12/03	UPDATED NOTE 3.	L.M.
5/29/04	ADDED NOTE 3.	L.M.
2/14/05	UPDATED NOTE 2, 3 AND 4.	P.C.
10/18/05	UPDATED NOTES 3 & 4.	L.M.
11/21/06	UPDATED NOTES 2, 3 & 4.	L.M.



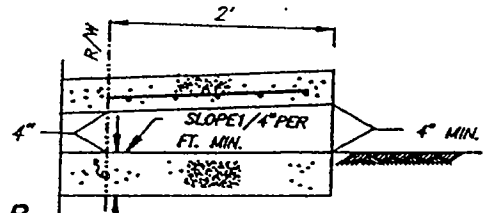
SECTION A-A



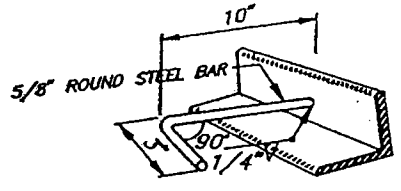
SECTION-INLET TYPE I



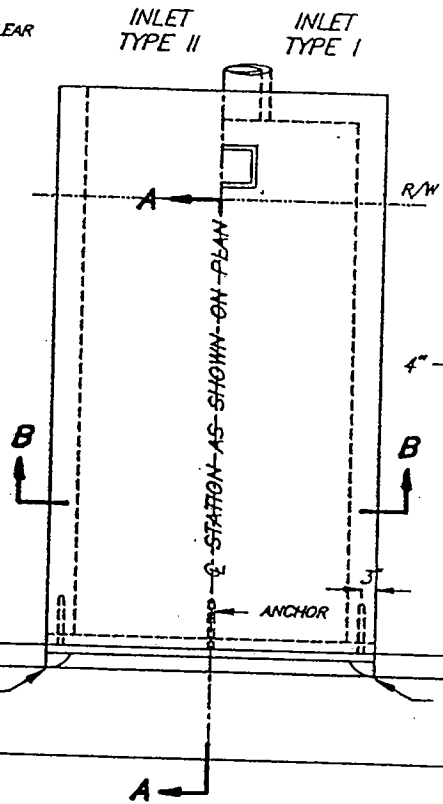
SECTION B-B



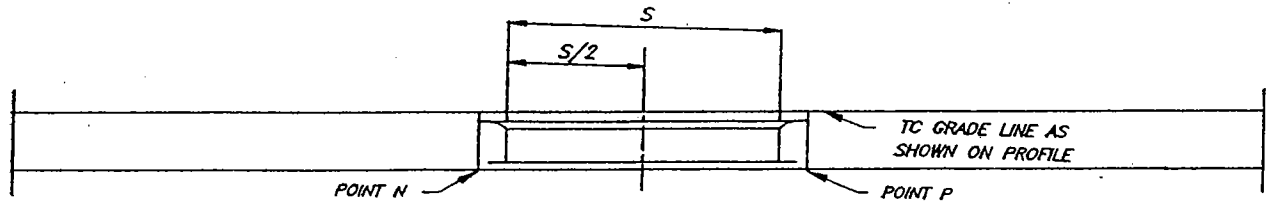
SECTION-INLET TYPE II



DETAIL OF ANCHOR  
(SEE NOTES 5 & 7)



PLAN



PROFILE

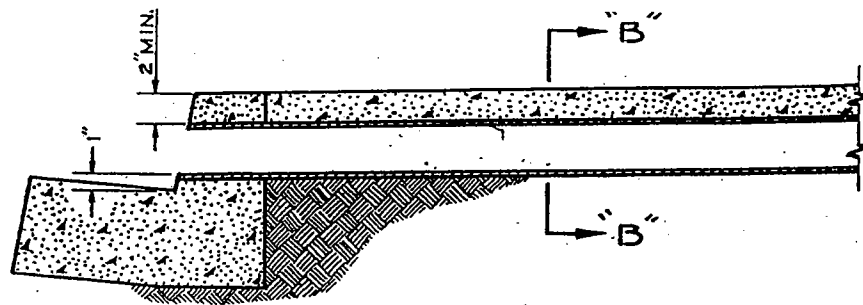
**NOTES:**

1. FLOOR OF BOX TO BE TROWELED SMOOTH.
2. WHEN THE TOE OF SLOPE IS WITHIN THE R/W INLET TYPE I BEGINS AT THE TOE RATHER THAN AT THE R/W LINE.
3. FOR OPEN DITCH APPROACH (TYPE II) THE 2' EXTENSION IS NOT REQUIRED WHEN THE BACK OF WALK IS 2' OR MORE FROM THE R/W LINE.
4. TOP OF INLET STRUCTURE (TYPE I & II) TO BE FLUSH WITH ADJACENT SURFACE WHERE PRACTICABLE.
5. A HEADED STEEL STUD 5/8" X 6 3/8" WITH HEAD D=1" ATTACHED BY A FULL PENETRATION BUTT WELD MAY BE USED AS AN ALTERNATE ANCHOR.
6. THE 3" LEG OF THE INTERIOR ANCHORS SHALL BE PARALLEL TO THE TOP OF SIDEWALK.

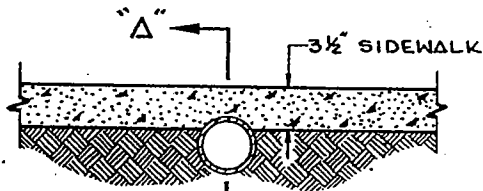
**STEEL LIST**

S	B	GALVANIZED STEEL ANGLE	ANCHOR	J BAR		
				SIZE	SPACING	LENGTH
1'-0"	3"	2 1/2" X 2" X 3/8"	2	#3	7"	1'-9"
1'-6"	"	"	"	"	"	2'-3"
2'-0"	"	"	"	"	"	2'-9"
2'-6"	"	"	"	"	"	3'-3"
3'-0"	"	"	3	"	"	3'-9"
3'-6"	"	"	"	"	6"	4'-3"
4'-0"	"	"	"	"	5"	4'-9"

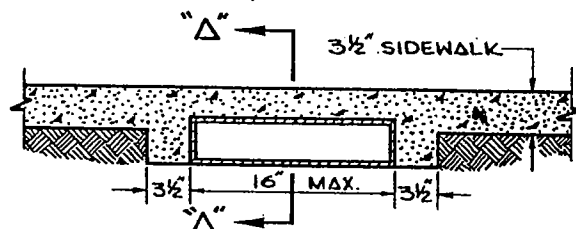
**PARKWAY DRAIN NO. 1**  
 CITY OF VERNON, CALIFORNIA  
 PUBLIC WORKS DEPARTMENT  
 MAY, 1991  
 STANDARD PLAN  
 DV 2171



SECTION "Δ"-Δ  
TYPICAL - TYPE 1 & 2



SECTION "B"-B  
TYPE 1



SECTION "B"-B  
TYPE 2

NOTES:

1. MATERIALS FOR TYPE 1 DRAINS SHALL BE STEEL, CAST IRON OR P.V.C. MATERIALS FOR TYPE 2 DRAINS SHALL BE STEEL OR CAST IRON ONLY.
2. REFERENCE IS MADE TO STANDARD PLAN PV 582 - STANDARD SIDEWALK, CURB AND GUTTER.

**CURB DRAINS**

CITY OF VERNON, CALIFORNIA

PUBLIC WORKS DEPARTMENT

AUGUST, 1971

STANDARD PLAN

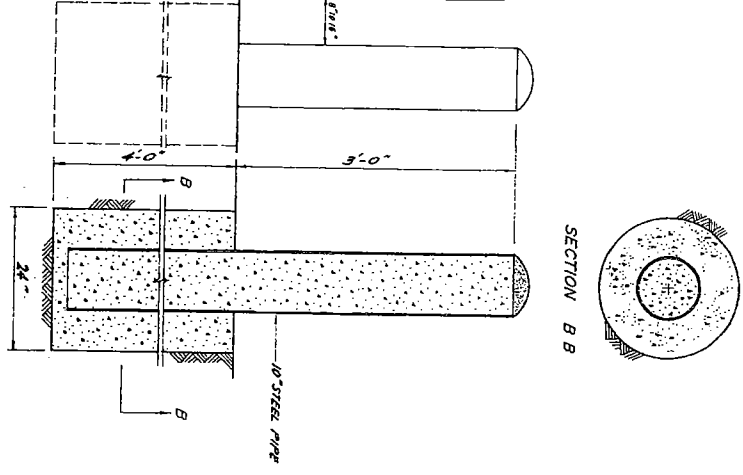
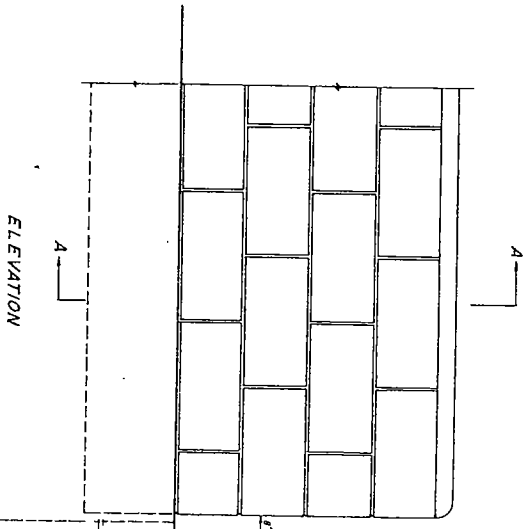
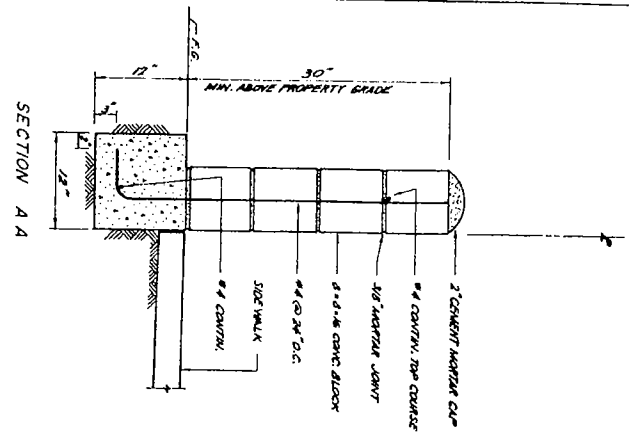
DV 1888

DATE	REVISION	NAME
10-8-53	UPDATED	V.A.

STANDARD MASONRY WALL BARRIER

CITY OF VERNON  
BUILDING DEPARTMENT

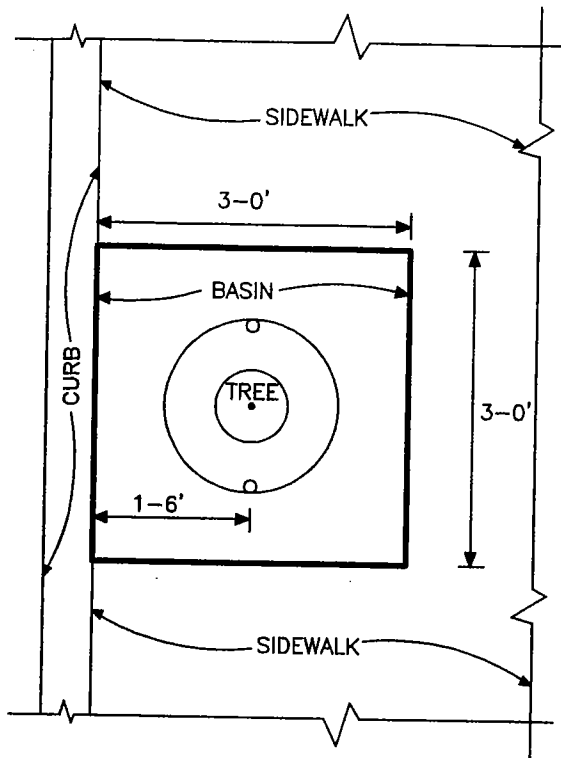
JUNE 1989



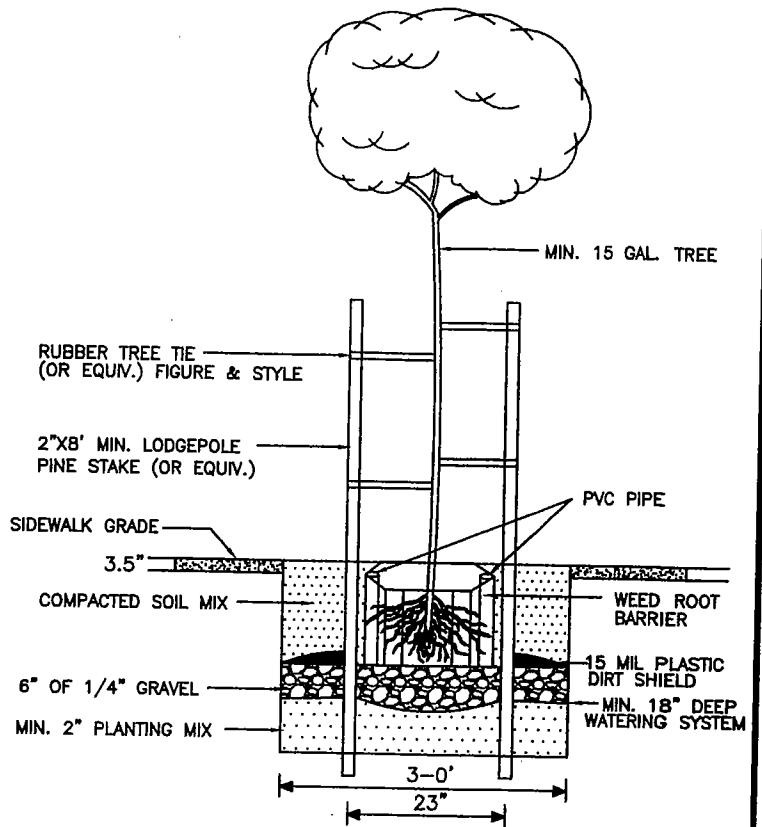
TYPICAL GUARD POST

NOTES:

1. BARRIERS ARE REQUIRED PER CITY OF VERNON ZONING ORDINANCE SECTION 26.4.2-8 (g) WHERE PARKING AREAS ADJOIN PUBLIC STREETS.
2. INSPECTIONS ARE REQUIRED PRIOR TO POURING FOOTINGS AND GROUTING.
3. WALL FOOTINGS AND GUARD POST FOOTINGS SHALL NOT PROTRUDE INTO PUBLIC RIGHT-OF-WAY.
4. FILL ALL BLOCK CELLS WITH GROUT.
5. GUARD POSTS AND WALLS SHALL HAVE INDEPENDENT FOOTINGS.
6. WEEP HOLES ARE REQUIRED WHERE PARKING AREAS DRAIN OVER THE SIDEWALKS.
7. PROVIDE 1/4" INCH EXPANSION JOINTS IN WALLS AT 40' O.C. MAX.
8. GROUTING OF ANY SECTION OF WALL SHALL BE COMPLETED WITH NO INTERRUPTIONS GREATER THAN ONE HOUR.
9. LAPING OF REINFORCING BARS SHALL NOT BE LESS THAN 24" FOR HORIZONTAL BARS AND NOT LESS THAN 12" FOR VERTICAL BARS.
10. ANY ALTERNATIVE OR DEVIATION FROM THIS STANDARD PLAN REQUIRES APPROVAL FROM THE DIRECTOR OF COMMUNITY SERVICES.
11. STANDARD GUARD POST SHALL BE CONSTRUCTED AT ENDS OF WALL BARRIER AT DRIVEWAYS.
12. 10" DIA. PIPE BARRIER MIN. SCHEDULE 30 SHALL BE INSTALLED AS SHOWN.
13. AFTER PLACEMENT OF REBAR, APPROVED SAFETY CAPS SHALL BE PLACED ON ENDS OF ALL EXPOSED REBAR.



PLAN VIEW



SIDE VIEW

NOTES:

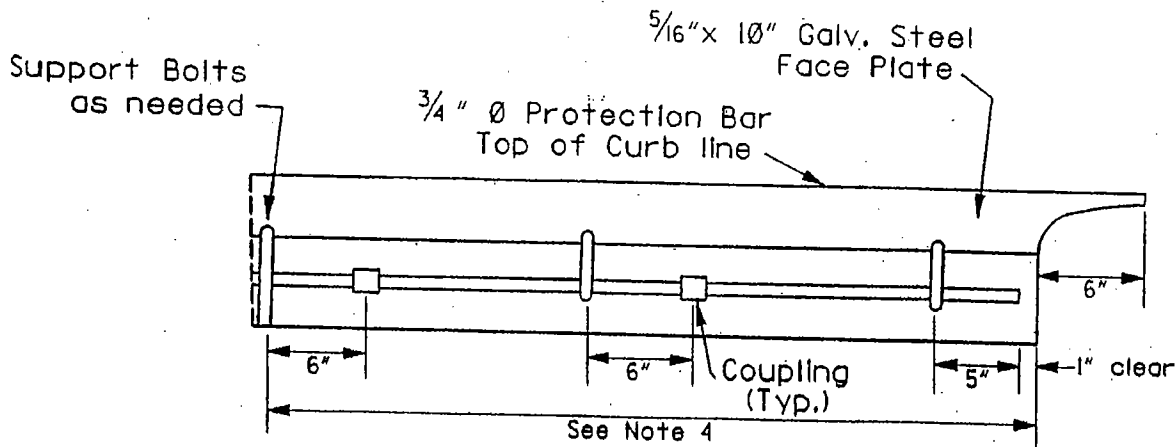
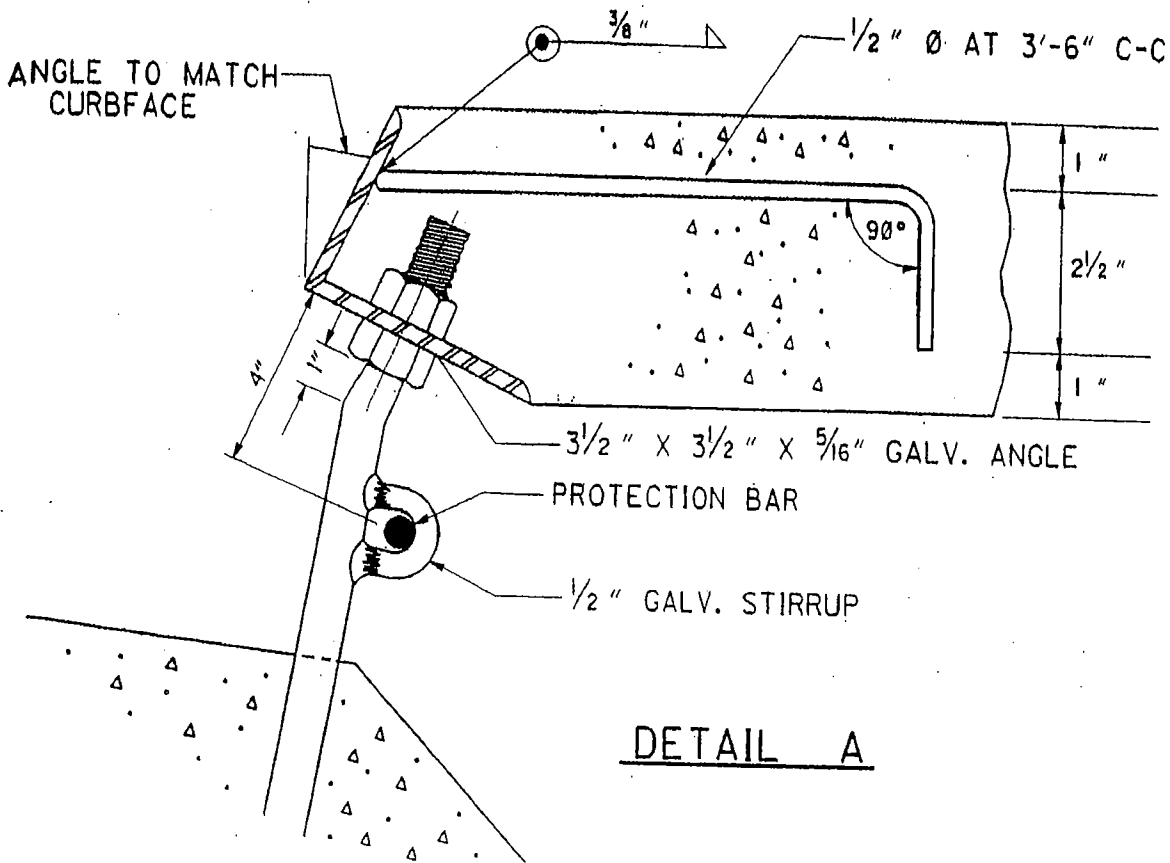
1. TREE SHALL BE IN 15 GALLON CONTAINER AND HAVE MINIMUM DIMENSIONS OF 8 FT HIGH, 3 FT WIDE AT THE HEAD AND A TRUNK OF 1 INCH.
2. TREE SPACING 100' OR PER CITY ENGINEER'S DIRECTION.
3. PLANT 25' MIN. FROM B.C.R. AT INTERSECTIONS.
4. PLANT 25' MIN. FROM EDGE OF DRIVE APPROACH.
5. PLANT 10' MIN. FROM UTILITY AND SEWER LINES.
6. PLANT 21' MIN. FROM STREET LIGHT STANDARDS.
7. PLANT 15' MIN. FROM POWER POLES.
8. PLANT 10' MIN. FROM FIRE HYDRANTS.
9. ONE YEAR WARRANTY FOR LOSS OR DAMAGE REQUIRED.

# STANDARD TREE PLANTING

CITY OF VERNON, CALIFORNIA  
COMMUNITY SERVICES & WATER DEPARTMENT  
OCTOBER 2003

STANDARD PLAN  
MV 1891

REVISIONS		
DATE	DESCRIPTION	INITIALS
10/2/03	2nd TREE WELL APPROVED	LM



PROTECTION BAR DETAIL

ORANGE COUNTY ENVIRONMENTAL MANAGEMENT AGENCY

Approved *E. R. Nelson*  
W.L. Zaun, Director of Public Works

Adopted: Res. 77-92 Revised: Res. 82-718, 88-1341

STD. PLAN

1306

MISCELLANEOUS CURB INLET DETAILS AND NOTES

SHT. 2 OF 3

## NOTES:

1. One eye bolt shall be placed 12" from each end of face plate.
2. Eye bolts shall be symmetrically spaced in the curb opening so that the unsupported span is not more than 4; support bolts, when used, should be considered as eye bolts in the spacing.
3. One coupling shall be placed 6" to the right or left of each eye bolt with the exception of the last eye bolt. Couplings shall be threaded to facilitate removal of protection bar.
4. Galvanized steel support bolts shall be installed when length of curb opening exceeds 7'-0" and shall be spaced at not more than 7'-0" O.C. and not less than 5'-0" O.C.
5. Face plate anchors shall be uniformly spaced not to exceed 4' between centers and shall be placed 4 1/2" from each end of the face plate. An anchor shall be placed over each W-beam in a grating beam.
6. A coupling may be omitted provided the protection bar is removable after installation.
7. All metal shall be galvanized after fabrication.
8. Support bolts, eye bolts, and anchors may be attached by a full penetration butt weld as an alternate.
9. Place a 3/4"  $\emptyset$  protection bar horizontally across the entire length of the curb opening.
10. See Std. Plan 1307 for additional miscellaneous Inlet details and notes.
11. Curb section shall match adjacent curb type.
12. Curb opening shall conform to curb alignment.
13. Height of curb opening will vary with the type of curb and the depth of the local depression (Std. Plan 1308).
14. The angle as shown on detail A shall be allowed only when on approved plans.

ORANGE COUNTY ENVIRONMENTAL MANAGEMENT AGENCY

Adopted: Res. 77-92

Revised: Res. 82-718; 88-1341

Approved

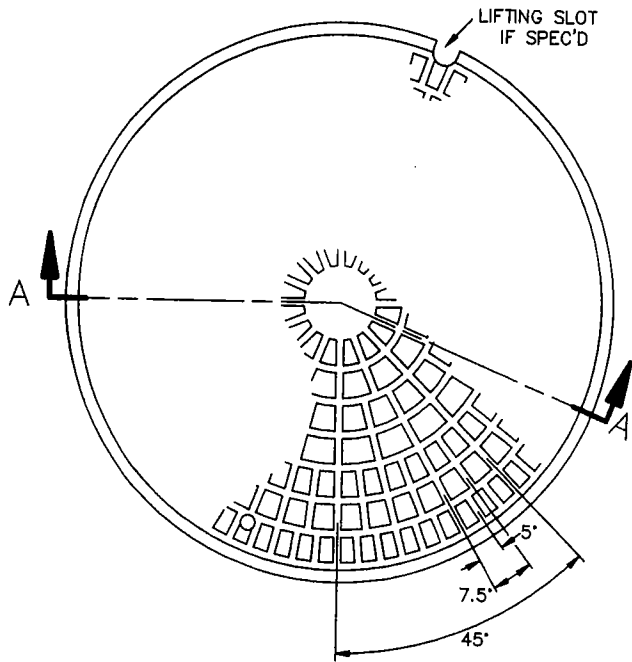
*C.R. Nelson*  
C.R. Nelson, Director of Public Works

STD. PLAN

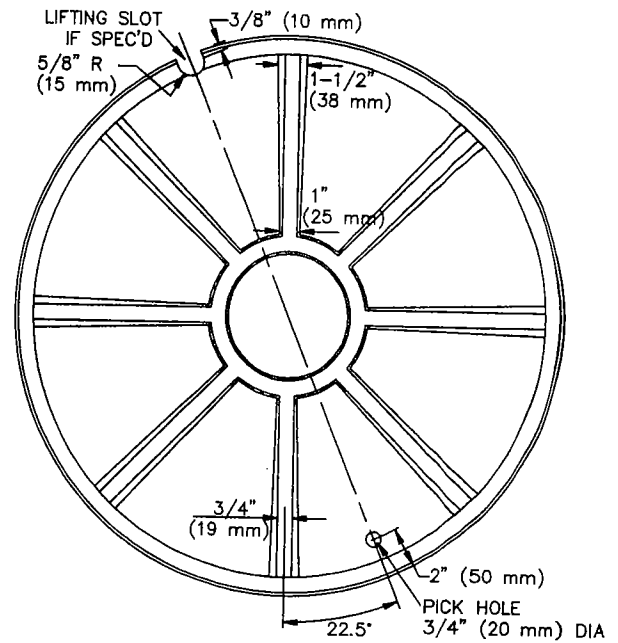
1306

SHT. 3 OF 3

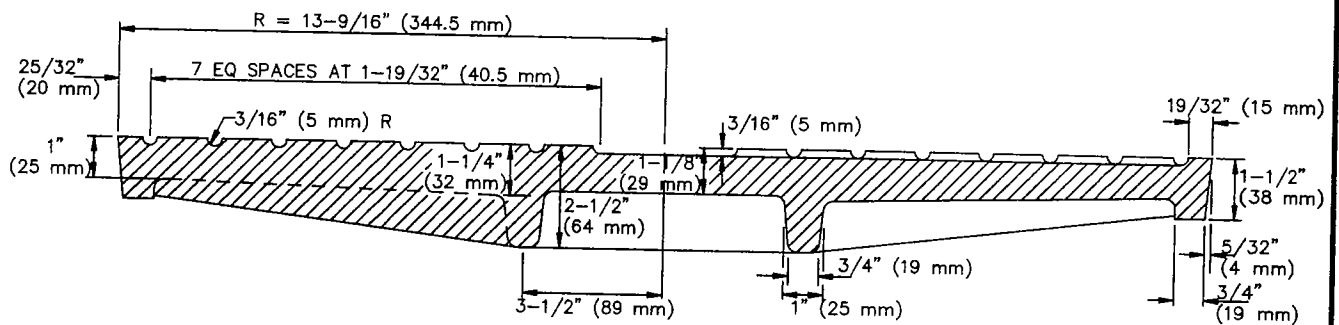
MISCELLANEOUS CURB INLET DETAILS AND NOTES



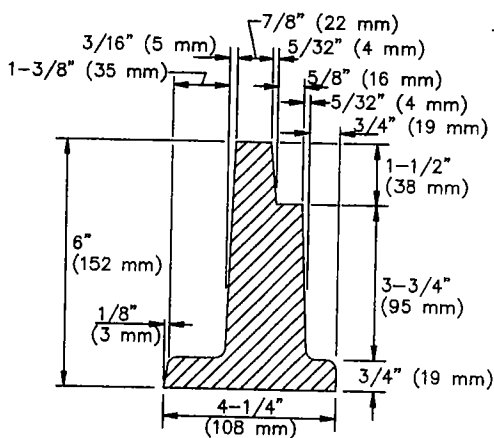
TOP OF COVER



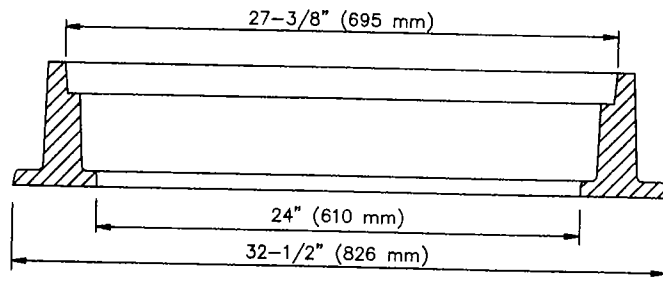
BOTTOM OF COVER



SECTION A-A



FRAME DETAIL



SECTION THRU FRAME

STANDARD PLANS FOR PUBLIC WORKS CONSTRUCTION

PROMULGATED BY THE  
PUBLIC WORKS STANDARDS INC.  
GREENBOOK COMMITTEE  
1984  
REV. 1990, 2009

**24" (610 mm) MANHOLE FRAME  
AND COVER**

STANDARD PLAN

**630-3**

USE WITH STANDARD SPECIFICATIONS FOR PUBLIC WORKS CONSTRUCTION

SHEET 1 OF 2